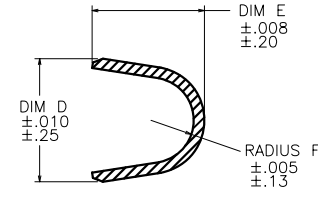
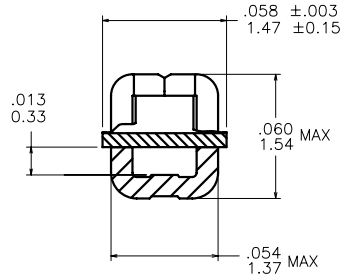
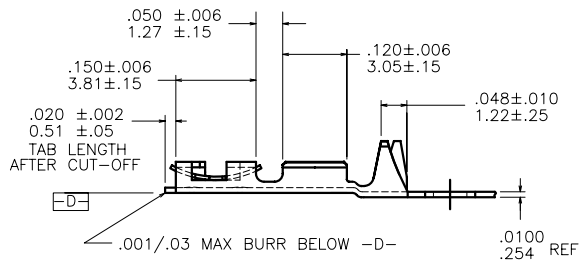
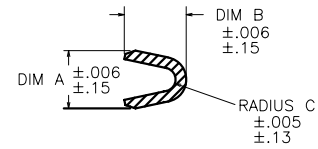
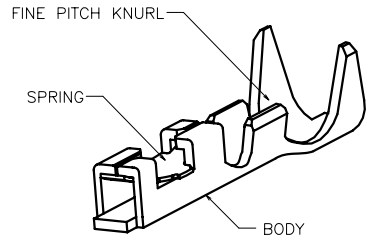
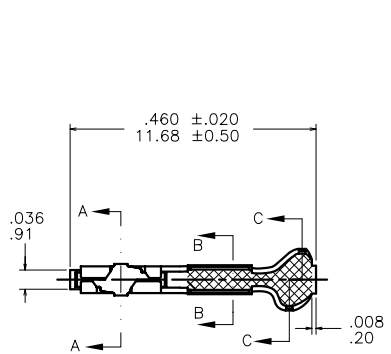


PRODUCT NUMBER SEE TABLE	AWG RANGE	WIRE BARREL			INSULATION BARREL			
		A	B	C	INS. DIA. RANGE	D	E	F
	18-20	.104/2.64	.104/2.64	.021/0.53	.042/1.07 - .103/2.62	.139/3.53	.120/3.05	.050/1.27
	22-26	.070/1.78	.070/1.78	.017/0.43	.036/0.91 - .103/2.62	.139/3.53	.120/3.05	.050/1.27
	28-32	.054/1.37	.058/1.47	.011/0.28	.028/0.71 - .054/1.37	.115/2.92	.105/2.67	.040/1.02



SECTION X-X
SCALE 4:1
ROTATED 90° CW

SECTION Z-Z
SCALE 2:1

mat'l. code SEE TABLE				surface	tolerance	projection	product family
ltr	ec'n no	dr	date	tolerances unless otherwise specified		INCH/MM	PV TERMINALS
F	V61198	EPK	1996-10-07	angles	XX +.01/X+.3		
G	V05-0469	HTB	2005-05-19		XXX +.005/XX+.13	scale 3:1	title MINI PV™ C.T.W. RECEPT. FOR .019 [0.48] PIN
H	V05-0530	HTB	2005-05-27	0° ±2'	XXXX +.0020/XXX+.051		
J	V06-0623	HTB	2006-06-28	dr	E. KROPIEWNICKI	1996-10-07	dwg no 75374
K	V07-0218	HTB	2007-03-16	engr	M. SMYK	1996-10-07	
L	V07-0517	HTB	2007-08-08	chr	T. BREWBAKER	1996-10-07	sheet index 1 2 3
M	V08-0115	HTB	2008-04-02	appd	M. SMYK	1996-10-07	
sheet index		revision	M	M	M	type CUSTOMER Drawing	



PRODUCT NUMBER		SPRING THICKNESS	AWG RANGE	MATERIAL & PLATING	
REELED	LOOSE PIECE			1/4 HARD BRASS BODY	BeCu HEAT TREATED SPRING
75374-001	75374-002	O B S O L E T E		40μ/1.02μ MIN GOLD OVER 50μ/1.27μ MIN NICKEL IN CONTACT AREA. REMAINDER OF PART GOLD FLASH.	GOLD FLASH
75374-001LF	75374-002LF	.0065/0.165	22-26		
75374-003	75374-004	O B S O L E T E			
75374-003LF	75374-004LF	.0048/0.120	22-26		
75374-005	75374-006	O B S O L E T E			
75374-005LF	75374-006LF	.0035/0.090	22-26		
75374-007	75374-008	O B S O L E T E			
75374-007LF	75374-008LF	.0065/0.165	28-32		
75374-009	75374-010	O B S O L E T E			
75374-009LF	75374-010LF	.0048/0.120	28-32		
75374-011	75374-012	O B S O L E T E			
75374-011LF	75374-012LF	.0035/0.090	28-32		
75374-013	75374-014	O B S O L E T E			
75374-013LF	75374-014LF	.0065/0.165	18-20		
75374-015	75374-016	O B S O L E T E			
75374-015LF	75374-016LF	.0048/0.120	18-20		
75374-017	75374-018	O B S O L E T E			
75374-017LF	75374-018LF	.0035/0.090	18-20		
75374-019	75374-020	O B S O L E T E		TIN	
75374-019LF	75374-020LF	.0065/0.165	22-26		HOT DIPPED TIN (NOTE 5)
75374-021	75374-022	O B S O L E T E			
75374-021LF	75374-022LF	.0048/0.120	22-26		HOT DIPPED TIN (NOTE 5)
75374-023	75374-024	O B S O L E T E			
75374-023LF	75374-024LF	.0035/0.090	22-26		HOT DIPPED TIN (NOTE 5)

mat'l. code		surface		tolerance		projection		product family	
SEE TABLE		✓						PV TERMINALS	
ltr	ecn no	dr	date	tolerances unless otherwise specified				title	
M				angles	.XX +.01/X+3 .XXX +.005/XX+13		INCH/MM scale 1:1		MINI PV™ C.T.W. RECEPT. FOR .019 [0.48] PIN
				0° ±2'	.XXXX +.0020/XXX+.051		scale 1:1		dwg no 75374 sheet 2 of 3 size A4
				dr	E. KROPIEWNICKI	1996-10-07			
				engr	M. SMYK	1996-10-07		type CUSTOMER Drawing	
				chr	T. BREWBAKER	1996-10-07			
				appd	M. SMYK	1996-10-07			
sheet index	revision sheet								



PRODUCT NUMBER		SPRING THICKNESS	AWG RANGE	MATERIAL & PLATING	
REELED	LOOSE PIECE			1/4 HARD BRASS BODY	BeCu HEAT TREATED SPRING
75374-025	75374-026	O B S O L E T E		O B S O L E T E	
75374-025LF	75374-026LF	.0065/0.165	28-32	HOT DIPPED TIN (NOTE 5)	
75374-027	75374-028	O B S O L E T E		O B S O L E T E	
75374-027LF	75374-028LF	.0048/0.120	28-32	HOT DIPPED TIN (NOTE 5)	
75374-029	75374-030	O B S O L E T E		O B S O L E T E	
75374-029LF	75374-030LF	.0035/0.090	28-32	HOT DIPPED TIN (NOTE 5)	
75374-031	75374-032	O B S O L E T E		O B S O L E T E	
75374-031LF	75374-032LF	.0065/0.165	18-20	HOT DIPPED TIN (NOTE 5)	
75374-033	75374-034	O B S O L E T E		O B S O L E T E	
75374-033LF	75374-034LF	.0048/0.120	18-20	HOT DIPPED TIN (NOTE 5)	
75374-035	75374-036	O B S O L E T E		O B S O L E T E	
75374-035LF	75374-036LF	.0035/0.090	18-20	HOT DIPPED TIN (NOTE 5)	

NOTES:

1. PART TO MATE WITH .019 ±.002/0.48 ±0.05 PIN.
2. TAB CUT-OFF DIM IS VERY CRITICAL WHEN USED IN CONJUNCTION WITH MINI ROD AND MINI LATCH HOUSINGS.
3. APPLICABLE SPECIFICATION :
 - A. TA-75 : CRIMP METHODS FOR USE IN MINI LATCH HOUSINGS.
 - B. TA-210 : CRIMP METHODS FOR USE IN MINI ROD HOUSINGS.
- ④. PRODUCT MEETS EUROPEAN UNION DIRECTIVES AND OTHER COUNTRY REGULATIONS AS DESCRIBED IN GS-22-008.
- ⑤. THIS PRODUCT HAS 100% TIN PLATING IN THE INTERFACE AND HAS NOT BEEN TESTED FOR WHISKER GROWTH IN ALL INTERCONNECT ENVIRONMENTS.
6. THIS PRODUCT IS NOT INTENDED TO BE EXPOSED TO MANUFACTURING SOLDERING PROCESSES.

mat'l. code		surface		tolerance		projection		product family	
SEE TABLE		✓				INCH/MM		PV TERMINALS	
ltr	ecrn no	dr	date	tolerances unless otherwise specified		INCH/MM		title	
M				angles	° ±2'	XX +.01/XX+3	scale 1:1	MINI PV™ C.T.W. RECEPT. FOR .019 [0.48] PIN	
						XXX +.005/XX+13		dwg no 75374 sheet 3 of 3 size A4	
						XXXX +.0020/XXX+051		type CUSTOMER Drawing	
		dr	T. BREWBAKER	2005-05-19			FCI		
		engr	T. BREWBAKER	2005-05-19					
		chr	T. BREWBAKER	2005-05-19					
		appd	T. BREWBAKER	2005-05-19					
sheet index	revision sheet								